



# Environmental Management System Training

**ISO 14001**

**Your Guide to EMS**

*What you need to know*

EMS Training – February 2015

## *RSCC's Policy*

*The RSCC Wire & Cable LLC's mission is to operate a profitable business by providing engineered high-performance wire and cable products that meet customer quality, delivery and service expectations, at a competitive price.*

*We are committed to:*

***R**eviewing established quality, environmental, and safety objectives*

***O**beying all legal, customer and applicable requirements*

***C**ontinuously improving our quality, safety, and environmental management systems*

***K**eeping a safe work environment with the objective of preventing injuries, illnesses, and pollution*

## ***Here are our new Objectives & Targets for 2015:***

---

**Objective # 1:** In continuing to reduce acetone, we are doing a trial study to find a more environmentally friendly substitute, which will reduce our accumulation and generation of hazardous waste. The study will begin in Metal Clad and will expand to the Exane by year end.

**Target:** Find a more environmentally friendly substitute for acetone.

---

**Objective # 2:** 100% elimination of cardboard discarded (Gaylord boxes) through the continuation of the implementation of the re-usable box system with our key suppliers.

**Target:** Process 1000 returnable boxes.

---

**Objective # 3:** Upgrade/ replace the internal lighting fixtures in Building 20-Exane Cell with new energy efficient LED Lighting.

**Target:**

1. Total Annual Electricity Savings – 228,571 kWh /\$27,429 based on 2014 Electricity Rates.
2. Annual Carbon Dioxide (CO<sub>2</sub>) Emissions Avoided – 326,132 lbs.
3. Annual Nitrogen Oxide (NO<sub>x</sub>) Emissions Avoided - 316 lbs.
4. Annual Sulfur Dioxide (SO<sub>2</sub>) Emission Avoided – 633 lbs.
5. Annual: 28 Cars off road/12,320 trees planted/182 homes lighted.

## ***Below are the results of our 2014 Objectives and Targets:***

**Objective # 1:** 10% Reduction in acetone use at the clean line from the implementation of Prowave, Print Vision, and new ink jet printers.

**Status:** We achieved 100% implementation of Prowave, Print Vision, and new ink jet printers on the clean line. However, acetone usage from the clean line was unable to be analyzed and measured, and our goal was not achieved.

**Objective # 2:** 5% reduction in Colored Bonded Paper from the implementation of the EZRF system.

**Status:** We exceeded our goal and reduced color bond paper by 71%.

**Objective # 3:** Increase the number of returnable dunnage to 249 by the end of 2014 in order to reduce cardboard waste.

**Status:** We exceeded our goal. We increased returnable dunnage to 406 units. We will continue this program in 2015.

**Objective # 4:** Upgrade/replace all external building lighting fixtures with new energy efficient LED lighting fixtures.

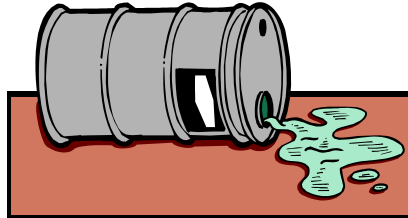
**Status:** We completed external lighting fixtures for building #27. We will continue this program for the inside of Exane for 2015.

- Total annual Electricity savings- 168,999 kWh based on 2013 rates.
- Annual Carbon Dioxide (CO<sub>2</sub>) Emmissions Avoided- 260,259 lbs.
- Annual Nitrogen Oxide (NO) Emmisions Avoided- 507 lbs.
- Annual Sulfur Dioxide (SO<sub>2</sub>) Emmisions Avoided- 1014 lbs.

***Here's some important information regarding incidental spills and environmental emergencies that you should ask yourself before attempting to clean a spill:***

- Do you know what the spilled material is?***
- Do you have the proper training to clean the spilled material?***
- Do you have the proper material to clean up the spill?***
- Can you contain and stop the source of the spill?***

***If the answer is "No" to any of the above questions- Immediately contact your Supervisor***



As responsible **RSCC** employees, we need to understand how our work activities (aspects) impact the environment. Below are those activities (aspects) that RSCC has deemed to be significant.

Do you know how your job's activities impact the environment? See below.

<b>PROCESS</b>	<b>ASPECT</b>	<b>IMPACT</b>
Facility-wide	Use of fluids, paints, chemicals for work at facilities	Generation of Hazardous Waste
Facility-wide process	Rags	Generation of Hazardous Waste & Non-Hazardous Waste
Facility-wide process	Use of Electricity	Depletion of natural resource - Energy
Grounds Keeping/ Maintenance	Storm water Run-off	Potential for Pollutants in Storm Water

Your EMS System representative is:



**Renita Morriar**

**Ext. 8468**

**[Renita.morriar@r-scc.com](mailto:Renita.morriar@r-scc.com)**